



## The height 's up to you. Lifting you up... safely and reliable!

With goracon's **G-worklift®** we can provide you with our well-known top-service as well as best quality working platforms - everything from one single supplier.

## goracon's **G-worklift®** working platforms offer a unique system for working safely at great heights.

The suspended working platform system for various applications consists of four main elements:

Platform, supporting frame, **G-trac®** hoist and **G-lock®** safety brake. The modular suspended platform system is versatile applicable with projects where scaffolding is insufficient or simply uneconomical.

Thanks to the variety of applications of the **G-worklift®**, complex structures can also be accessed. The various system modules can be used to assemble many standard and special platform configurations. The standard platform configurations are CE certified.



## The advantages of **G-worklift®**:

- Best quality of design and materials
- With the **G-worklift®** the accessible heights are unlimited
- Flexibility due to many standard and special platform configurations
- Simple transportation thanks to the modular system
- **G-worklift®** provides high load capacity through low net weight.
- Quick assembly and disassembly without the need for special tools
- Certified according to EN 1808 as well as BGR 159 and CE.





## Double deck suspended platform with carrying beam

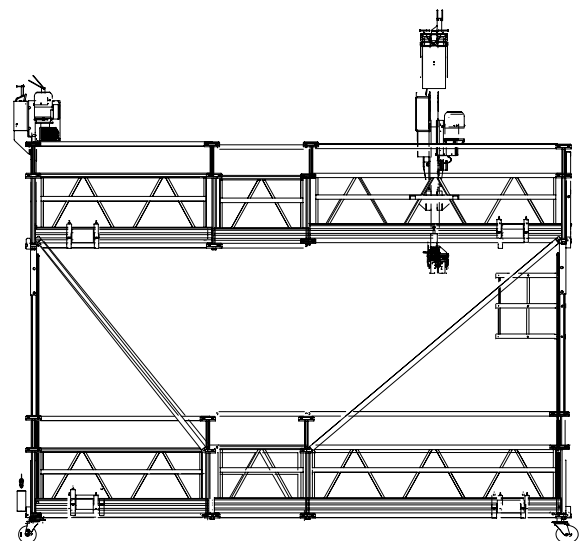
By using the double deck system, the standard modular working platform can be extended to a double deck platform. This allows working simultaneously on different levels.

A lead frame provides the connection on each end of the platform. The different levels can safely be accessed through a bottom hatch on the upper deck and a ladder with hoop guard.

### Your advantages:

- Working simultaneously on different levels
- Platform lengths from 2 m up to 10 m
- Only two hoists are necessary for lifting and lowering of the platform
- 3 m standard height between the different levels (other distances possible)
- Ideal solution for the assembly of facade elements

We will be glad to inform you about the different platform configurations. Feel free to contact us!





### 1. Flooring

- Both sides of the flooring can be used, which doubles the durability
- Narrow openings in the flooring avoid sticking of dirt
- Platform without protruding parts
- Light-weight aluminum design

0,5 m platform element	3,6 kg	2 m platform element	12,2 kg
1 m platform element	6,5 kg	3 m platform element	18,3 kg



### 2. Side frames

- Light-weight aluminum design
- Integrated baseboard and knee bar

0,5 m side frames	3,5 kg	2 m side frames	12,2 kg
1 m side frames	7,6 kg	3 m side frames	19,8 kg



### 3. Cross beams (platform connecting elements)

- Required for linking the platform and assembling of the base structure
- Railing supports simply fit into the cross beams
- Light-weight aluminum design

Cross beams excluding connecting pins Weight: 4.7 kg



### 4. Railing and Railing Supports

- Variable railing height (max. height 1.10 m)
- User-friendly and efficient in terms of assembly time
- Light-weight aluminum design

Railing support	1 kg	0,5 m railing	0,8 kg	2 m railing	3,0 kg
		1 m railing	1,7 kg	3 m railing	4,3 kg



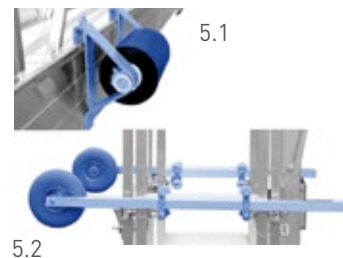
### 5. Distance retainer

**5.1** Prevents damage to the facade

**5.2** Adjustable rollers - Facade role:

- Flexibly mounted along the baseboard
- Rollers for facades on telescopic rods
- Adjustable in two axes
- Distance retainer, elastic

Weight: 5 kg



### 6. C-Bracket

- Simple and easy to transport (also available as foldable design)
- A real light-weight!
- Low weight compared to other types of C-brackets
- No loose parts

Weight: 84 kg (weight without G-trac® and G-lock®)

- cable guide: 34 kg
- Aluminum bracket with rollers: 50 kg



**7. Endguardrail (necessary if C-brackets are used)**

- Light-weight aluminum design
- Application required in combination with C-brackets
- Easy assembly
- With integrated baseboard

Endguardrail

Weight: 4.7 kg

**8. Galvanized carrying beam (in two designs)**

- Made of steel for long durability
- Applicable for platform lengths of max. 12 meters
- The carrying beam can also be used as endguardrail which requires fewer parts

Carrying beam

Weight: 18 kg

**9. Swivel castors with brake (for the C-bracket)**

Can alternatively be used either at the front or at the rear in the horizontal arbor of the C-bracket

- Equipped with galvanized reel holders
- Allow for easy movement of the suspended platform on the ground
- Castors are mounted to the cross beams with connecting pins

Castors with brake

Weight: 4 kg

**10. Fixed corner-sections**

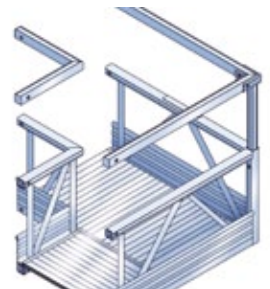
- Mounted to the cross beam with connecting pins
- Integrated railing
- Available in 4 different angles: 30°, 45°, 60°, 90°

Corner-section 30° 8 kg

Corner-section 45° 10.5 kg

Corner-section 60° 13.5 kg

Corner-section 90° 29 kg

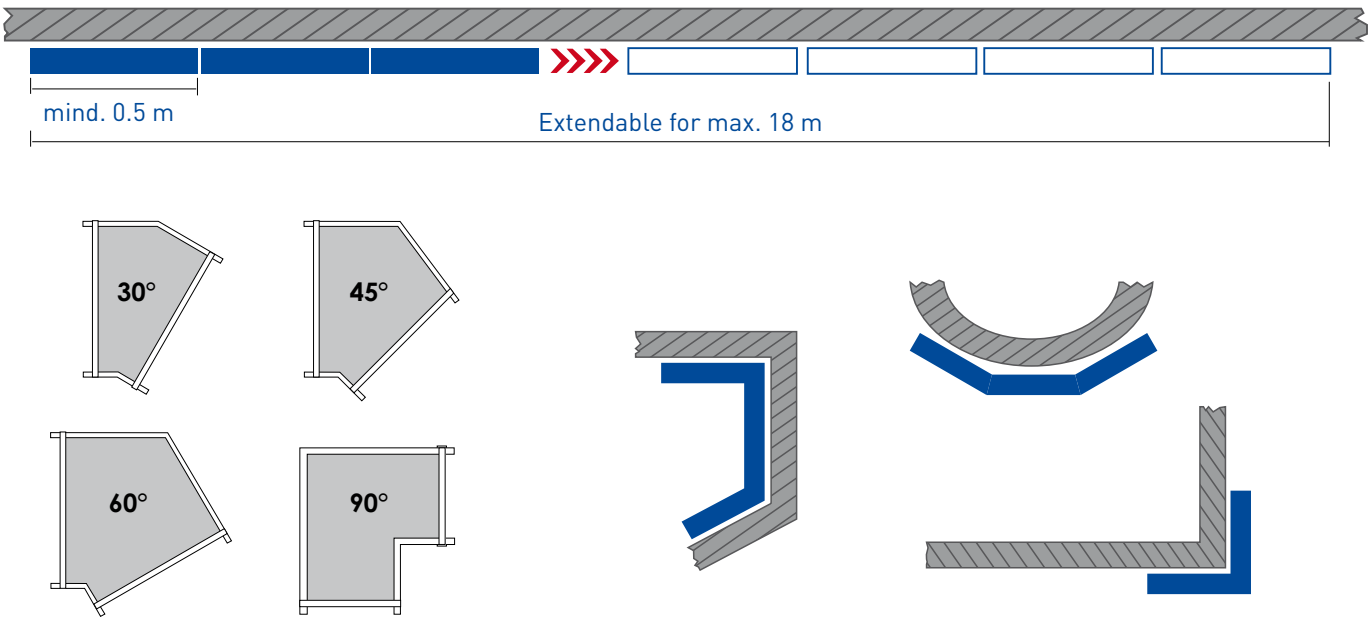
**11. Adjustable corner-sections**

- Unique design
- Stable steel structure
- Flexible in any situation
- Assembly of the suspended platform with connecting pins (7 angles are adjustable: 20°, 30°, 45°, 51°, 60°, 72° and 90°)
- Including cross beams, railing supports and adjustable chain side sections

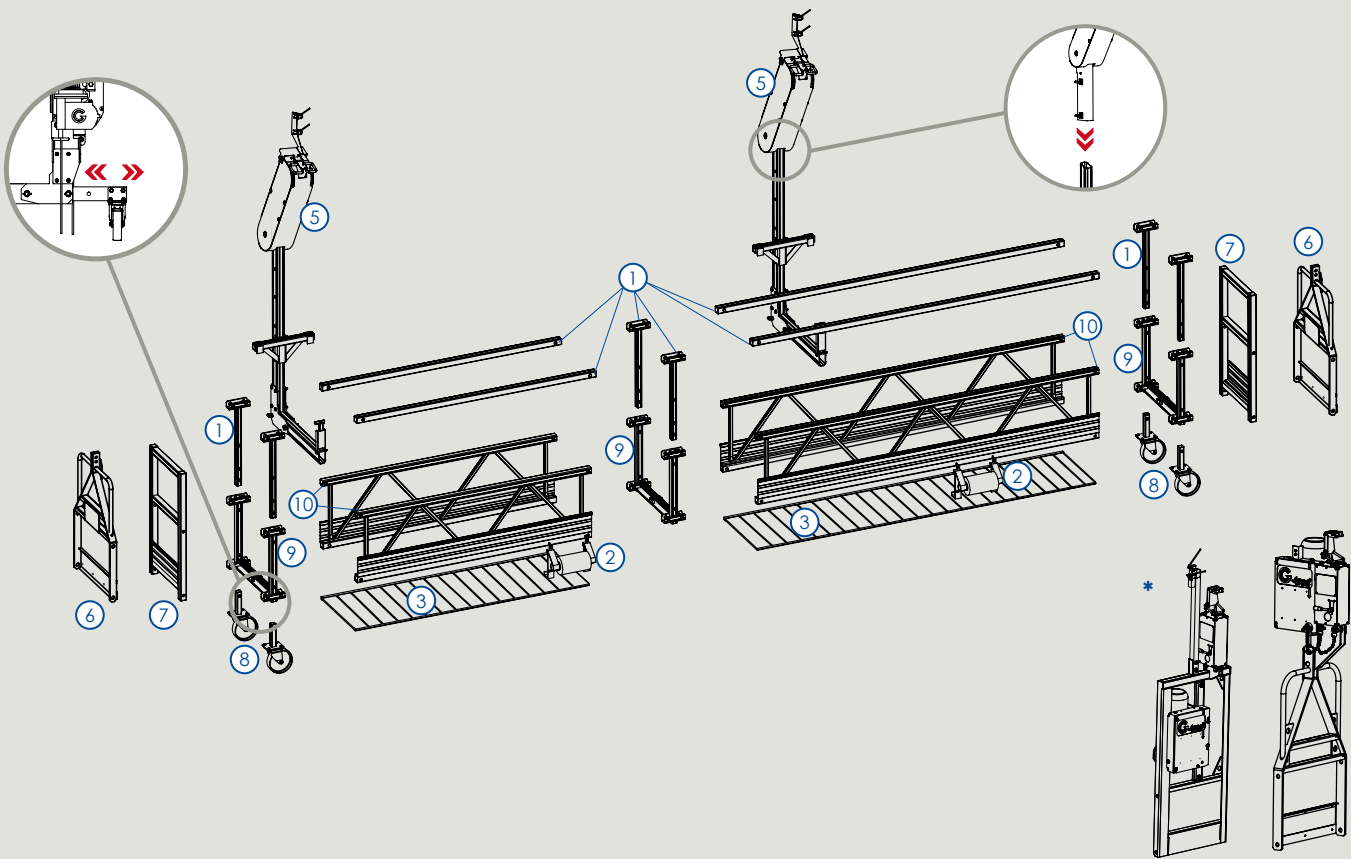
Adjustable corner-sections (20°, 30°, 45°, 51°, 60°, 72°, 90°)

Weight: 58 kg



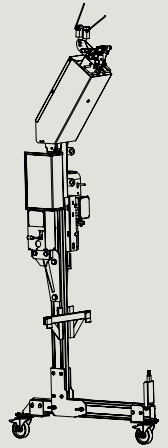


Standard corner-sections  
Corner-sections can be adjusted to any building shape. The optimum distance to the work in a surface can here by be.



## G-worklift® with C-Bracket

- C-brackets are used if the total platform length exceeds the distance between ropes/hoists.  
In this case the platform can be extended via the suspension points through the balcony overhang.
- Larger platform length up to 18 m are available.
- Maximum CE-certified platform length: 18 m
- The balcony with the C-bracket suspension is supposed to be equally long on both sides and should be assembled according to below chart..

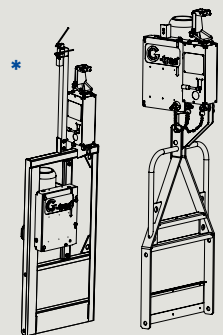


			G-trac® 400			G-trac® 500			G-trac® 600			G-trac® 800		
Total length (m)	Example assembly	Dimension between Ropes (m)	kg	Load capacity (kg)		kg	Load capacity (kg)		kg	Load capacity (kg)		kg	Load capacity (kg)	
*2	2	-	236	150	1	240	250	2	240	350	3	-	-	-
2	2	1	430	350	2	435	380	2	435	380	3	445	380	2
3	3	2	455	320	3	455	520	3	455	570	3	465	570	3
4	2-2	3	485	290	3	485	490	4	485	690	4	495	770	4
5	3-2	4	510	270	3	510	470	5	510	670	4	520	960	5
6	3-3	5	535	240	2	535	440	5	535	640	4	545	1000	6
7	2-3-2	5-6	-	-	-	565	410	4	565	610	4	575	970	7
8	3-2-3	6-7	-	-	-	590	390	4	590	590	5	600	950	8
9	3-3-3	5-8	-	-	-	615	360	4	615	560	5	625	930	6
10	3-2-2-3	6-9	-	-	-	645	330	3	645	530	5	655	890	6
11	3-2-3-3	7-10	-	-	-	670	310	3	670	510	5	680	870	6
12	3-3-3-3	8-10	-	-	-	690	280	2	690	480	4	700	730	5
13	3-2-3-2-3	8-10	-	-	-	725	250	2	725	450	4	735	570	5
14	3-3-2-3-3	9-11	-	-	-	-	-	-	745	430	4	755	580	5
15	3-3-3-3-3	10-12	-	-	-	-	-	-	770	410	3	780	600	4
16	3-3-2-2-3-3	11-13	-	-	-	-	-	-	800	380	3	810	610	4
17	3-3-2-3-3-3	12-14	-	-	-	-	-	-	825	350	3	835	630	4
18	3-3-3-3-3-3	13-15	-	-	-	-	-	-	850	330	3	860	660	4

\* Platform length of 2 m needs only one C-Bracket

## G-worklift® with carrying beams

- Carrying beams with G-trac® are mounted to each end of the platform.
- Maximum platform length: 12 m
- Maximum distributed load: 1150 kg (see chart).
- The chart is based on the use of 2 hoists per platform.
- The load is to be equally distributed over the length of the platform with a maximum area load of 300 kg/m² (=180 kg/m).



			G-trac® 400			G-trac® 500			G-trac® 600			G-trac® 800		
Total length (m)	Example assembly		kg	Load capacity (kg)		kg	Load capacity (kg)		kg	Load capacity (kg)		kg	Load capacity (kg)	
2	2		280	380	2	285	360	380	285	380	2	290	380	2
3	3		305	470	3	310	540	570	310	570	3	315	570	3
4	2-2		335	440	3	340	620	640	340	640	4	345	770	4
5	3-2		360	420	3	359	560	580	359	580	5	370	960	5
6	3-3		380	390	3	383	480	590	383	590	5	395	1150	6
7	2-3-2		410	360	3	415	440	560	415	560	5	425	1150	7
8	3-2-3		435	340	3	440	410	540	440	540	4	450	1130	8
9	3-3-3		460	320	2	465	390	510	465	510	4	470	1100	8
10	3-2-2-3		490	290	2	495	370	480	495	480	4	505	1070	6
11	3-2-3-3		515	260	2	520	350	460	520	460	3	530	710	5
12	3-3-3-3		540	240	2	545	390	440	545	440	3	550	560	4



## Suspension device

### Roof jibs

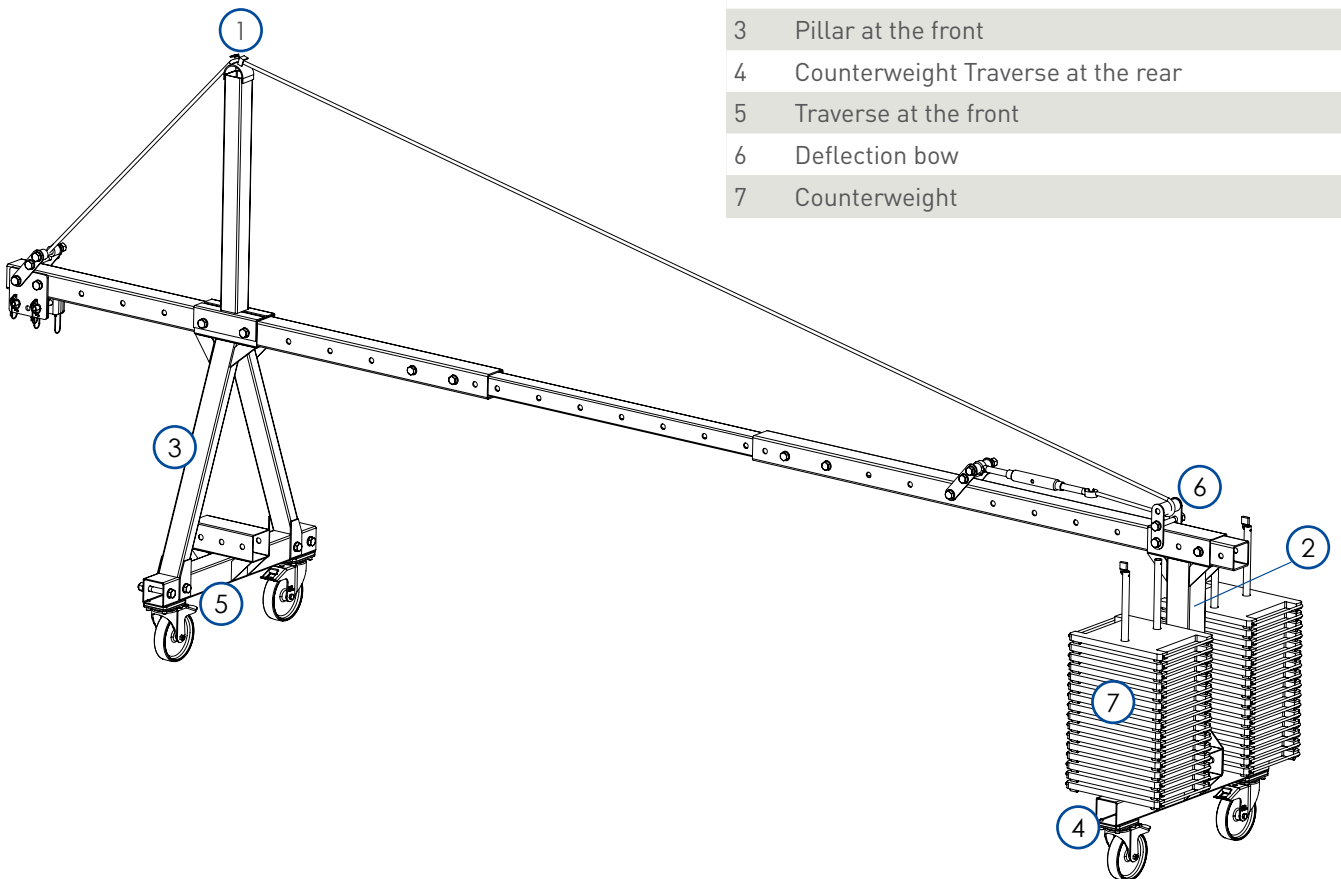
- Galvanized steel construction: Site-friendly, robust and protected against all weather conditions.
- Every component fits into a standard internal plug-in
- Ergonomically designed counterweights
- A variety of possibilities for various attic heights (high and low versions)
- CE-certified (as part of an overall system)
- Distance between front stand member and rear stand is variable in length (from 2.32 m to 5.92 m)
- Extension versatile in length (standard from 0.8 m to 2 m)
- Options: Extra-long telescopic tube for longer extensions

We will be glad to inform you about the different configurations.  
Feel free to contact us!

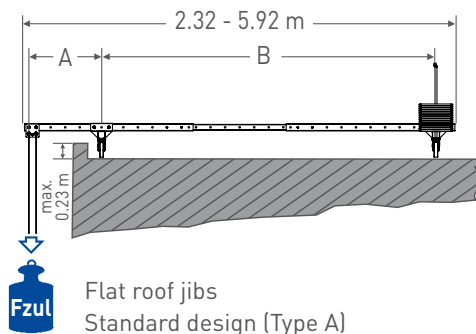


The roof jib consists of

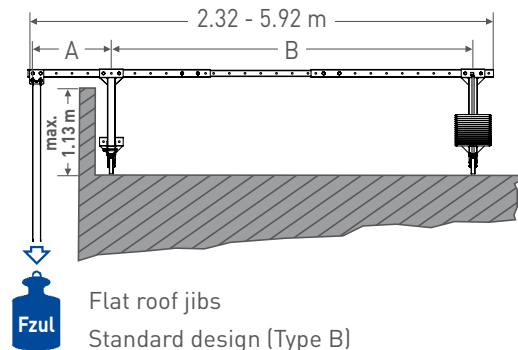
- |   |                                    |
|---|------------------------------------|
| 1 | Cable guide                        |
| 2 | Pillar at the rear                 |
| 3 | Pillar at the front                |
| 4 | Counterweight Traverse at the rear |
| 5 | Traverse at the front              |
| 6 | Deflection bow                     |
| 7 | Counterweight                      |



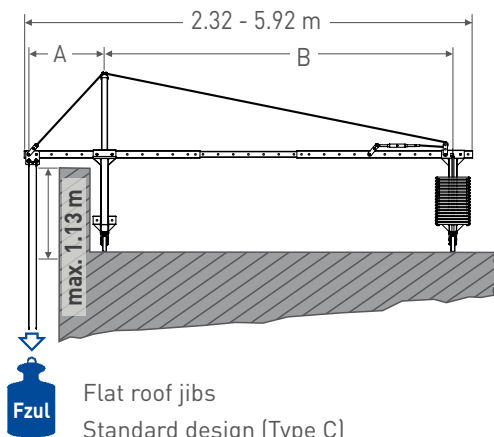




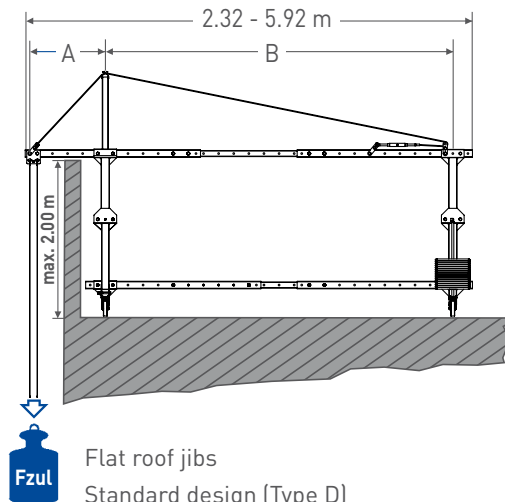
Flat roof jibs  
Standard design (Type A)  
Without bracing kit.



Flat roof jibs  
Standard design (Type B)  
Without bracing kit.



Flat roof jibs  
Standard design (Type C)  
With bracing kit.



Flat roof jibs  
Standard design (Type D)  
With bracing kit.

#### Maximum load [A]

Admissible carrying capacity (Fmax) per jib	Without bracing kit	With bracing kit.
400 kg	1.60 m	2.00 m
500 kg	1.40 m	2.00 m
600 kg	1.20 m	1.80 m
800 kg	1.00 m	1.20 m

We understand admissible carrying capacity as the carrying capacity of the winch and not of the actually attached load.

The above-mentioned carrying capacities correspond to the carrying capacities of our friction hoist:

G-trac® 400

G-trac® 500

G-trac® 600

G-trac® 800

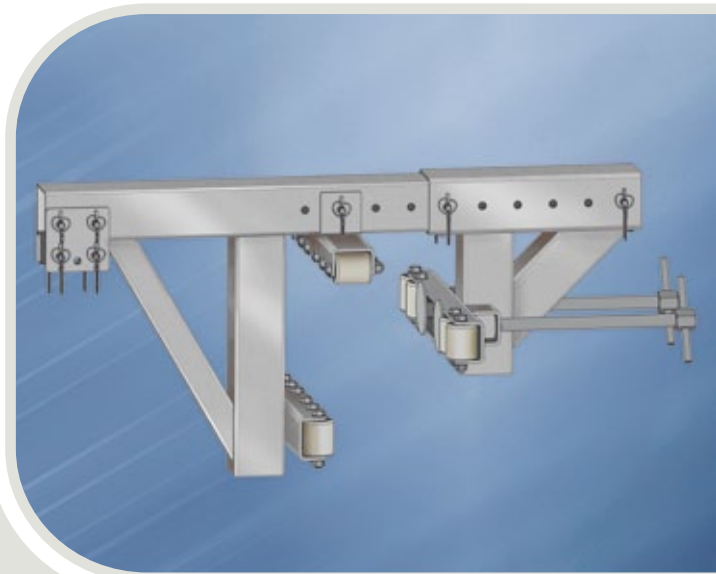
Parapet clamp

- parapet clamps are moved on synthetic castors.
- Adaptation to the parapet thickness in grid increments.
- All galvanized components.

The parapet clamp consists of

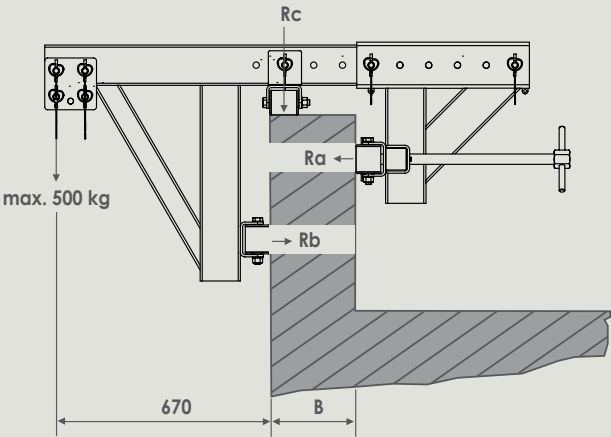
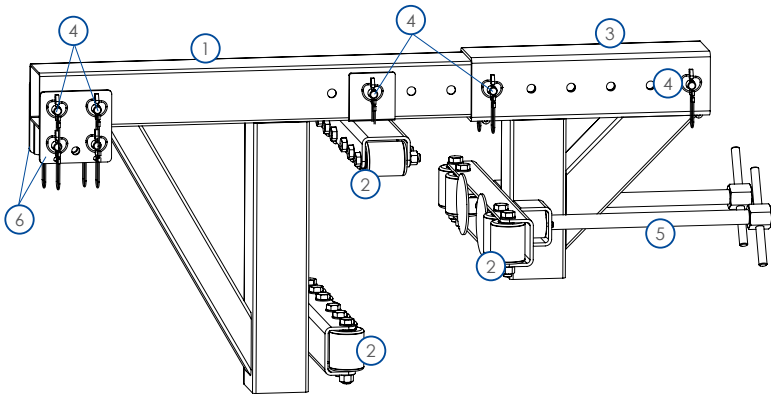
1	base beam
2	landing gear
3	clamp unit
4	safety pin
5	stepless adjustment to adapt to the parapet strength
6	Bracket for fixing the traction and safety ropes

For more information or technical specifications, please do not hesitate to contact us.



! Attention

Check the sustainability of parapet!  
Usually, only steel structures and reinforced concrete parapets are suitable.

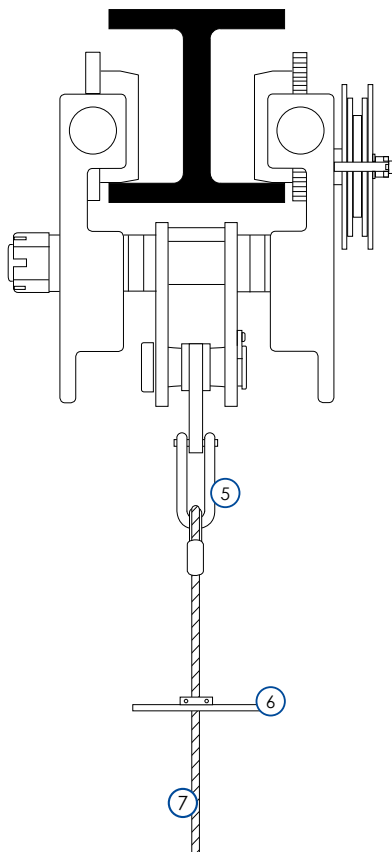
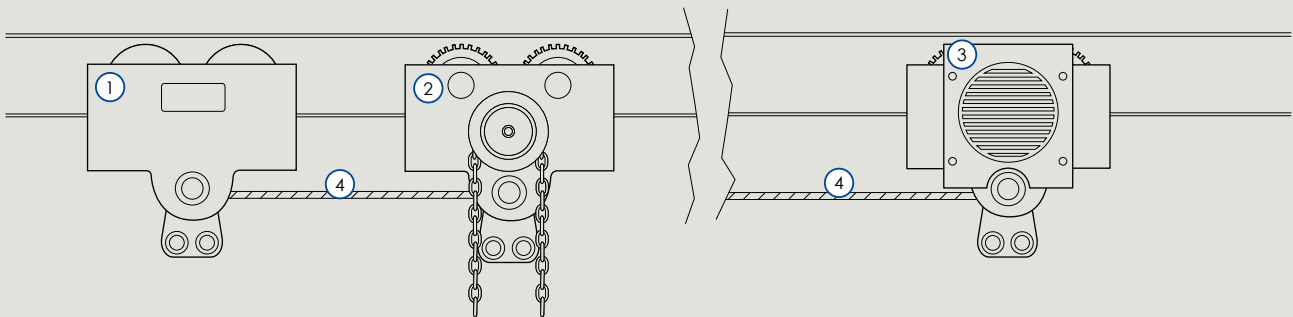


extension mm	parapet thickness B mm	Weight kg	cimensions length x width	carrying capacity of the hoist	max. bearing pressure in kg Ra = Rb Rc	devinitive bearing pressure in kg Ra = Rb Rc
670	150-450	92 (50+42)	1950 x 750	500 kg	1330   590	3100   1420

### Chassis design (on-site tracks)

Where a sufficiently strong support structure is available or can be mounted, for example, to our jibs and parapet clamps, you can easily attach your working platform to a chassis.

It enables a lateral movement of the working platform, manually or power operated.



- 1 Push trolley
- 2 trolley with chain-operated travel
- 3 electric trolley
- 4 coupling rod
- 5 shackle
- 6 stop plate (limit switch)
- 7 Driving / safety rope

For more information or technical specifications, please do not hesitate to contact us.



goracon systemtechnik gmbh  
Färbereistraße 4  
D-48565 Steinfurt  
Phone +49 2552 9975-0  
Fax +49 2552 9975-10  
[www.goracon.de](http://www.goracon.de)  
[info@goracon.de](mailto:info@goracon.de)

Technical specifications are  
subject to change  
Status: August 2018